

# Radio Shack®

## COMPUTER CENTER

# CHRISTMAS SAVINGS



**SALE!**  
TRS-80® Model II  
Now at Its  
Lowest Price  
Ever

**\$500<sup>00</sup>  
Off**

Reg.  
3499.00

**2999<sup>00</sup>**

- 64K Memory ■ 12" High-Resolution Monitor
- Built-In 486K Double-Density 8" Disk Drive
- Detachable Typewriter Keyboard with Datapad
- Two RS-232C Serial Communications Interfaces
- Parallel Port Lets You Add a Printer Anytime

**Give Your Business a Break—  
A Tax Break, That is!**

**Our most popular single-user business computer** is now available for only \$2999. And since the Model II may qualify as a business deduction, your company could get a full year's depreciation plus applicable investment tax credit if you put it in service now! This powerful multi-purpose workstation can handle countless business and professional applications, including word processing, planning and forecasting, analysis and modeling, accounting, inventory control and data base filing—just add our well-documented, easy-to-use software. Model II can be outfitted to communicate directly with mainframe computers using our optional bi-sync packages. Your Model II can even be upgraded at any time to super-fast, super-powerful 16/32-bit processing, just like our state-of-the-art TRS-80 Model 16—and you'll still have the capability to run all your Model II programs! 26-4002 ..... Sale 2999.00

**Did You Know That Your Company Can Lease  
A Model II for Less Than \$105\* per Month?**

\*Plus Applicable Tax



**New Inside**  
Sale Prices End 12/27/82—Except as Noted  
Daisy Wheel & Line Printers—Page 4  
Model III Software—Page 12  
High-Speed Modem and  
Portable Terminal  
—Page 11

# Sale! TRS-80® Word Processing System



## Save \$537

Reg. Separate  
Items 5932.00

## 5395<sup>00</sup>

Breeze through your paperwork with this ready-to-use system. A TRS-80 Model II (26-4002) and our powerful SCRIPSIT™ 2.0 word processing program (26-4531) make it easy to prepare memos, letters, reports, forms and much more. Just type in your text—making corrections, adding or deleting words and sentences, moving paragraphs—on the Model II display screen. All editing is done electronically before anything is printed. When your material is just the way you want it, our letter-quality Daisy Wheel II (26-1158; with cable, 26-4401) prints as many “correction-free” originals as you need at 500 words per minute. SCRIPSIT offers

you a wide range of advanced features to simplify your tasks. Yet there are no long lists of commands or confusing special keys to memorize. A few simple keystrokes will insert; delete; duplicate text; reset margins, tabs and line spacing; hyphenate your text; unedit changes; re-order pages and much more. SCRIPSIT can automatically number pages, insert headers and footers, center text, even search for a specified word and replace every occurrence with a different one. And you can save your work on disk for quick revision at any time. Make this professional TRS-80 word processing system a part of your office today.

### Automatic Sheet Feeder

## 1495<sup>00</sup>

Designed for  
Daisy Wheel II

Printer and  
required  
installation  
not included.



Print “personalized” form letters on your own letterhead. Feeds and stacks up to 200 sheets. Adjusts for paper length and width. Removes easily.  
26-1448 ..... 1495.00



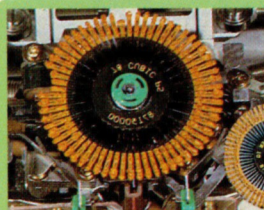
### Automatic Envelope Feeder

## 1195<sup>00</sup>

Designed for  
Daisy Wheel II

Printer and  
required  
installation  
not included.

Holds up to 200 envelopes—#6 to #10 size—and feeds them into aligned typing position. Handles up to 1200 per hour. Easy to remove for single-sheet use.  
26-1260 ..... 1195.00



### Sale! Print Wheels

Interchangeable Print Wheels  
For the Daisy Wheel II

## Save Up to 33%

Reg.  
29.95

Reg.  
39.95

## 19<sup>95</sup>

## 29<sup>95</sup>

Save \$10 per wheel! Each one prints clean, sharp characters. Choose from a variety of styles to give your letters and reports variety and impact.

**A Courier 10 Pitch.**  
Reg. \$29.95.

26-1420 ..... Sale 19.95

**B Prestige Elite 12 Pitch.** Reg. \$29.95.

26-1421 ..... Sale 19.95

**C Madeleine PS.**

Reg. \$29.95.

26-1422 ..... Sale 19.95

**D Cubic PS.**

Reg. \$29.95.

26-1425 ..... Sale 19.95

**E Tile Italic 12 Pitch.**

Reg. \$29.95.

26-1426 ..... Sale 19.95

**F OCR B.** Reg. \$39.95.

26-1484 ..... Sale 29.95

**G Letter Gothic.**

Reg. \$39.95.

26-1485 ..... Sale 29.95

**H Cubic 15.** Reg. \$39.95.

26-1487 ..... Sale 29.95

**I Bold PS.** Reg. \$39.95.

26-1488 ..... Sale 29.95

A	ABCDEFGH abcdefg 01234 ; ; <=> ?
B	ABCDEFGHI abcdefgh 012345 ; ; <=> ? @
C	ABCDEFG abcdefghi 012345 ; ; <=> ? @
D	ABCDEFG abcdefghi 012345 ; ; <=> ? @
E	ABCDEFGHI abcdefgh 012345 ; ; <=> ? @
F	ABCDEFG abcdef 01234 ! @ # \$ %
G	ABCDEFGH abcdefg 012345 ! @ # \$ % ^
H	ABCDEFGH abcdefg 012345 ! @ # \$ % ^
I	ABCDEFGH abcdefg 01234 ! # \$ % & *

# Sale! Workstation and Accessories 1/3 Off!

Equip Your Office with this  
Deluxe Modular Workstation

Save \$332<sup>50</sup>

Reg. Separate Items 995.00

Complete  
Workstation  
As Shown

662<sup>50</sup>

Buy the  
Entire  
Workstation—  
Or Only  
The Pieces  
You Need

Creating Your Own "Customized"  
Workstation Is Easy and Affordable!  
Let the Experts at a Radio Shack  
Computer Center Show You How!



These attractive modules in simulated walnut vinyl veneer accent any office. Sturdy and durable. Some assembly required.

**Workstation Desk.** Large enough to hold all your work—65 1/2" wide by 29" deep. Knockout plugs at each end for power and telephone cords. Includes modesty panel. Reg. \$299. 74-1050 ..... Sale 199.00

**Riser Assembly.** Full-length 65 1/2" shelf for books and manuals. Two-sided bulletin board. Reg. \$299. 74-1051 .... Sale 199.00

**Return Assembly.** Full-size 90-degree wing is 41" wide by 26" deep—ideal for a computer, printer or typewriter. Mounts on left or right. Reg. \$159. 74-1052 ..... Sale 106.00

**2-Drawer Assembly.** Handy drawer combination can be mounted on the left or right of Workstation Desk, described at left. Assembly measures 12 1/4" wide by 16" deep. Top drawer, 5" high; bottom drawer, 9 3/4" high. All-steel construction. Reg. \$189. 74-1053 ..... Sale 126.00

**Disk Expansion Bay Assembly.** Holds TRS-80 Model II Disk Expansion Unit. All-steel construction. 14 1/2 x 19 x 18 1/4". Reg. \$49. 74-1054 ..... Sale 32.50

**New! Hard Disk Expansion Bay Assembly** (not shown). Holds Primary or Secondary Hard Disk Unit. All-steel construction. 19 1/2 x 6 1/4 x 18 5/8". Reg. \$49. 74-1055 ..... Sale 32.50

## Comfortable "Roll-Around" Workstation Chair

Save 33%

Reg. 69.95

46<sup>50</sup>

- Matches Deluxe Workstation
- Upholstered



Attractive and built to last. Two-inch foam-cushioned seat and pivot back. Rug casters permit easy mobility. Durable black nylon fabric on chrome frame. Seat height is 17". 74-1056 ..... Sale 46.50

## Sale! Data Drawer Printout Files and Inserts

Save 33% Reg. 99.95 and 109.95

Low As 66<sup>50</sup>

- Six Locking Drawers with Handles
- Modular Design Permits Stacking



**Printout Size.** 14 7/8 x 11". Reg. \$109.95. 70-507 ..... Sale 73.25  
**Teakwood Vinyl Veneer Top.** Reg. \$22.50. 70-510 ..... Sale 14.95  
**Letter Size.** Up to 8 1/2 x 14". Reg. \$99.95. 70-508 ..... Sale 66.50  
**Teakwood Vinyl Veneer Top.** Reg. \$22.50. 70-509 ..... Sale 14.95  
**Cassette Drawer Insert.** Reg. \$7.50. 70-511 ..... Sale 4.95  
**Printwheel Drawer Insert.** Reg. \$7.50. 70-512 ..... Sale 4.95

Everything to Make Your Office Jobs Easier is as Close as Your Nearby Radio Shack Computer Center! 3

# Announcing Two New Radio Shack Printers

**Affordable 132-Column  
Dot Matrix Printer**



**NEW!**  
**1195<sup>00</sup>**

- Excellent for Business Use
- Bi-Directional, Logic-Seeking Print Head
- Word Processing, Bit-Image Graphics and Data Processing Modes

## NEW 10 CPI CORRESPONDENCE FONT

Colors can influence the people. For instance, the color has been known to attract the eye. The color of the wrapper may also affect

**DMP-400.** Incredibly versatile! Its word processing capability gives you proportionally-spaced and mono-spaced correspondence character sets, backspace, boldface, underline, super and subscripts. You can also get elongated characters, impressive graphics and efficient output. Prints 10, 12 or 16.7 characters per inch; 51 lines per minute (132 column), 140 cps at 10 cpi. Mode and pitch are switch or software selectable. Prints original, plus two copies. Adjustable, removable tractor—4" to 15". Parallel and serial interfaces. U.L. listed. 26-1251 ..... 1195.00

## Low-Cost, Letter-Quality Word Processing Printer

- Produces Executive-Quality Documents
- Prints Over 300 Words per Minute
- Uses Interchangeable Print Wheels

**1495<sup>00</sup>**

**NEW!**

**DWP-410.** Our new daisy wheel printer gives your letters and reports that perfect electric typewriter "look". Switch selectable print densities let you choose 10 or 12 characters per inch or proportional spacing. Features forward and reverse paper feed and 1/2-line feed, underline, boldface and programmable backspace, plus 1/120" space and 1/48" line feed. You can use our interchangeable print wheels (below) for a variety of type styles. "External Program Mode" lets you use print wheels with a different pitch or with special characters. Handles up to 16" wide paper. Parallel interface. With Courier 10 print wheel and carbon ribbon cartridge. U.L. listed. 26-1250 ..... 1495.00

**Bi-Directional Tractor Feed.** Just snap into place to use fanfold paper with the DWP-410. Ideal for labels, multi-part forms or long data processing runs. Requires minimal printer supervision. Removes easily. 6<sup>3</sup>/<sub>8</sub> x 20<sup>3</sup>/<sub>8</sub> x 13". 26-1459 ... 239.95



DWP-410 not included.



**Includes  
Print Wheel  
And Ribbon**

## Top-Quality Accessories for the DMP-400 and DWP-410 Printers

### Printer Cables

**Model I/III Cable.** 26-1401 ..... 39.00  
**Model II/16 Cable.** 26-4401 ..... 39.00  
**Color Computer Cable.** DMP-400 only. 26-3020 ..... 4.95

### Replacement Printer Ribbons

**DMP-400 Fabric Ribbon Cartridge.** One-million-character life. 26-1418 ..... 11.95  
**DWP-410 Carbon Film Cartridge.** Multi-strike, 250,000-character life. 26-1419 ..... Pkg. of 3/21.00  
**DWP-410 Nylon Ribbon Cartridge.** Black, one-million-character life. 26-1449 ..... 10.95

### Interchangeable DWP-410 Print Wheels

All standard Radio Shack fonts available.

**Courier 10 Pitch.** 26-1430 ..... 29.95  
**Prestige Elite 12 Pitch.** 26-1431 ..... 29.95  
**Madeleine PS.** 26-1432 ..... 29.95  
**Cubic PS.** 26-1433 ..... 29.95  
**Tile Italic 12 Pitch.** 26-1434 ..... 29.95  
**OCR B.** 26-1435 ..... 39.95  
**Letter Gothic 12 Pitch.** 26-1436 ..... 39.95  
**Cubic 15.** 26-1438 ..... 39.95  
**PS Bold.** 26-1439 ..... 39.95

# You Can Manage Inventory Efficiently!

## New! TRS-80 Model 16 Hard Disk Inventory Control Software

Easily Handles  
Up to 30,000  
Inventory Items!

# 399<sup>00</sup>

### Solve Your Inventory Problems

Inventory control is a must for every company that has to maintain an investment budget, yet meet consumer demand. Achieving the proper balance requires immediate information about the flow of merchandise and prudent decision-making concerning that flow. Now our powerful TRS-80 Model 16 Hard Disk Inventory Control System (ICS) software (and a Model 16 computer system, described below) can make the whole task much less tedious and time-consuming—and that can help your business get ahead, and save you money, too.

### Stop Guessing About Stock Levels

The control of your inventory becomes easier and much more accurate as our Model 16 ICS assists you in cycle counting, ordering from vendors, and numerous other tasks. It produces a Reorder Report showing items below a designated reorder level, an On-Hand Listing, and a Suggested Order Listing by prime vendor that's based on an inventory level that you define.

### Keep Your Inventory Up to Date

The Model 16 ICS gives you complete maintenance of referenced files—you can almost effortlessly add, delete, inquire/edit and list. You can post receipts of inventory items (even handle partial receipts) and print purchase orders by P.O. number. The program also prints a Cycle Count Worksheet, provides you with a Sales Journal and prints labels.

### Thorough Reports Keep You Informed

Our ICS program prints a variety of detailed reports, including an Inventory List, Vendor List, Counter Price List, Zero Reorder Point List, Open Purchase Order List and Cost of Inventory.

### Design Your Own Reports, Too

This versatile program allows you to custom design up to five different reports. That way you can get printouts of your inventory information in an order that's most beneficial to your business. For example, you can get inventory levels by stock number, vendor code, even location sequence.

### Large System Capacity

The Model 16 Hard Disk ICS handles up to 30,000 inventory items, with up to 99 vendors, 99 purchase orders and 5100 purchase order line items.

### Easy to Use

Virtually any business can benefit from this efficient and easy-to-implement inventory management system. You won't have to hire a programmer or become one yourself either—the program comes ready to run. It's user-friendly, with a well-documented manual that leads you step by step through each feature. You can have the complete system up and running in no time at all, and it can be operated by anyone in your office.

**Model 16 Hard Disk ICS Program.** 26-6302 ..... 399.00

## Model 16 COBOL Development System

Write Your Own  
Applications Programs **299<sup>00</sup>**

A high-level implementation of ANSI-74 COBOL. It features multi-keyed ISAM for quick data access, interactive DEBUG for program development and testing with address stop, single step and variable display, CRT control with extended ACCEPT/DISPLAY commands for attractive screen formatting, full level-2 I/O commands, an Editor for creating and changing source programs and a single-pass Compiler to generate object code. Includes user's guide and programming manual. 26-6100 ..... 299.00

## Complete Model 16 Hard Disk Inventory Control System

With Our Ready-to-Run Software,  
You Can Use This System for  
Accounting, Data Base Filing,  
Spreadsheet Planning and More.



# 11,127<sup>00</sup>

System as Shown

Requires  
installation

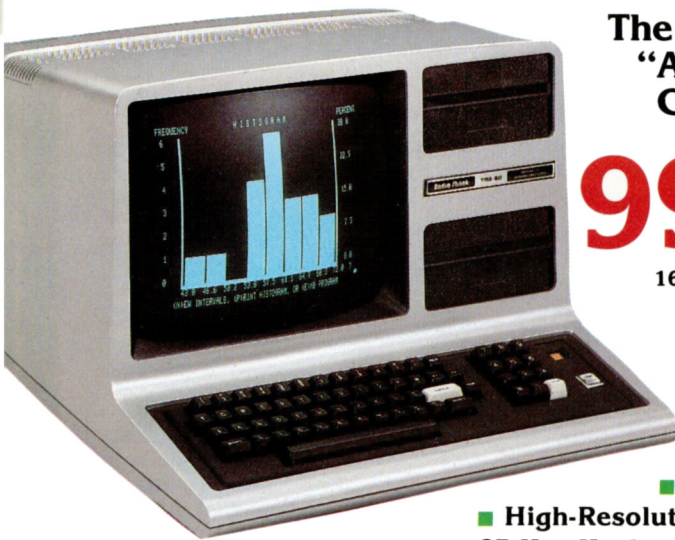
**TRS-80 Model 16 System.** This fast and powerful system (pictured) can handle complex inventory management tasks with ease. It includes our new Model 16 Hard Disk Inventory Control program (26-6302) described in detail above. You also get the 128K TRS-80 Model 16 microcomputer (26-6001) with a built-in 1.25 megabyte floppy disk drive. Its state-of-the-art technology gives you true 16-bit processing power and multi-user operating capability (available soon). That means Model 16 can help you manage the largest of inventories. Model 16 can also function as a Model II, and run Model II programs. This allows you to utilize our accounting, planning and forecasting, data base management and word processing software. The TRS-80 Primary Hard Disk Drive (26-4150) gives you extremely fast access to 8.4 million bytes of data. This

means that, together with the Model 16, you'll have over 9,600,000 bytes of "on-line" data storage. Our new DMP-400 dot-matrix business printer (26-1251; with cable, 26-4401) provides you with professional inventory reports. It has 132-column capability, and can print 51 lines per minute.

**TRS-80 Model II System (not shown).** We also offer a powerful inventory system utilizing our popular Model II. For a limited time, this system is only \$9127. You save \$500 thanks to Model II's low sale price. You get the Model II Hard Disk ICS program (26-4802), the sale-priced 64K TRS-80 Model II microcomputer (26-4002) with a built-in 486K-byte floppy disk drive, the TRS-80 Primary Hard Disk Drive (26-4150), and our new DMP-400 dot-matrix business printer (26-1251; with cable, 26-4401).

**TRS-80 Is Supported By More Software Than Any Other Microcomputer in the World**

# Model III Is a Great Christmas Surprise!



The Affordable,  
"All-in-One"  
Computer

## 999<sup>00</sup>

16K Model III BASIC

An Ideal  
Starter  
System

- Easy to Expand
- High-Resolution 12" Monitor
- 65-Key Keyboard with Datapad
- Built-In Parallel Printer Interface

A TRS-80 Model III makes an ideal gift for your family—or yourself! Everything you need is included in one attractive, desktop package. A 16,000-character memory and our easy-to-learn Model III BASIC language make it just the right computer to get you started and keep you going. Ready for fun and games? Add a cassette recorder and enjoy exciting games like Invasion Force and Quick Watson. And there are useful programs to help you analyze your stocks and investments, set up a household budget, do word processing and much, much more. When you're ready to move up to more memory and disk drives, or add a printer or telephone modem, so is your Model III. Includes our entertaining, self-paced tutorial manual. U.L. listed. 26-1062 ..... 999.00

**Sale! Model III and I Programs**

## Half Price!

**Includes  
Games and  
Personal Finance  
Programs**

**"Quick Watson".** You play the role of super-sleuth Sherlock Holmes and find the culprit based on the computer's clues—if you can! Requires 4K Level I, 16K Level II or Model III BASIC. Reg. \$4.95. 26-1802 ..... Sale 2.47

**Trendex Stock Trend Analysis.** Provides short, medium and long range trend indications based on formulas used by professionals. Includes portfolio of your choice. Requires 16K Level II, Model III BASIC or 32K 2-Disk. Reg. \$49.95. 26-1509 ..... Sale 24.97

**Tiny Pascal.** Great introduction to PASCAL structured programming language in a fixed point, non-array version. Includes sample programs. Model I version only—requires 16K Level II BASIC. Reg. \$19.95. 26-2009 ..... Sale 9.97

**Invasion Force.** Destroy the enemy aliens before they destroy you! Exciting fast action. Requires 16K Level II or Model III BASIC. Reg. \$14.95. 26-1906 ..... Sale 7.47

**Dancing Demon.** Cute little demon tap dances to "Ain't She Sweet" or your own music! Requires audio amplifier, 16K Level II or Model III BASIC. Reg. \$9.95. 26-1911 ..... Sale 4.97

**Casino Games.** Includes Craps, Keno, Slot Machine, Roulette, Wheel of Fortune, Baccarat. Requires 16K Level II or Model III BASIC. Reg. \$19.95. 26-1806 ..... Sale 9.97.

**"Eliza" Artificial Intelligence.** Answers your questions with amazing shrewdness. Requires 4K Level I, 16K Level II or Model III BASIC. Reg. \$14.95. 26-1908 ..... Sale 7.47

## Radio Shack Brings Teachers, Students and Computers Together

### Courseware Development TRS-80 AUTHOR I

A screen-oriented authoring system that allows teachers to create computer assisted instruction materials—without programming experience. Features full-screen editing, graphics and automatic score-keeping option. Includes a glossary, hints, positive and negative feedback messages, even prints student scores and timings. And you can branch within lessons, to other AUTHOR I lessons, or to non-AUTHOR I programs. Sample lesson included on diskette. Requires 32K 1-Disk Model III or I. Printer optional. 26-1727 ..... 149.95

### TRS-80 AUTHOR I Lesson Presentation Package

Lets you present lessons that others have developed using TRS-80 AUTHOR I. Score recording and printing features allow the teacher to print out student scores and timings. Sample lesson included on diskette. Not required if you have TRS-80 AUTHOR I. Requires 32K 1-Disk Model III or I. Printer optional. 26-2707 ..... 64.95

### New! TRS-80 MicroPILOT™ CAI Authoring for Model III

MicroPILOT is a command-oriented authoring system that allows teachers to create courseware on the Model III, or adapt existing curriculum that's suitable for computer assisted instruction. TRS-80 MicroPILOT includes extended graphics and disk handling capabilities, plus enhanced Model I MicroPILOT commands and eight new commands. And it doesn't require extensive computer programming knowledge. Complete instruction manual with sample lesson and reference section included. Requires 32K 1-Disk Model III. Printer optional. 26-2718 .... 119.95

### Reading Skills Courseware New! C.A.R.D. I: Sentences

Tutorial lessons in sentence skills adapted from the Philadelphia School District's Computer Assisted Reading Development program. Requires 48K 1-Disk Model III and AUTHOR I Lesson Presentation Package (26-2707). 26-2603 ..... 199.00



### High Motivation Reading Series

Uses an illustrated reader and read-along audio tape. Designed for levels 4-6. Measures comprehension in several skill areas. Repeatable drill exercises in spelling and vocabulary. Requires 32K 1-Disk Model III and TRS-80 MicroPILOT (26-2718).



### New! Computer Discovery™

These new additions to our Computer Education Series introduce students to computers, their evolution and impact on society, and fundamental programming concepts. Each package includes interactive exercises, 25 student workbooks and an instructor's manual.



**Computer Discovery for Junior High.**

26-2630 ..... 189.95

**Additional Workbook.** 26-2631 ..... 4.25

**Computer Discovery for Senior High.**

26-2632 ..... 189.95

**Additional Workbook.** 26-2636 ..... 4.25

### Secondary Math Programs

Includes problem-solving or tutorial exercises. Each program requires 16K Level II or Model III BASIC, and each is Network 3 compatible.

**Essential Math, Volume II.** A drill-and-practice program for grades 7-12 that reinforces concepts introduced by the teacher. Covers fractions, decimals and percent, plus pre-algebra concepts. Gives immediate feedback for correct and incorrect answers. Programs have been thoroughly field-tested. Includes placement mode, promotion and demotion. 26-1719 ..... 199.00

**Investigations in Integral Calculus.** Students graph and compute areas of functions. Includes activities and teacher's manual. 26-2600 ..... 39.95

**Plane Analytic Geometry.** Generates problems involving straight lines and conic sections. Offers help, too. 26-2602 ..... 39.95

# Bonus Offer! TRS-80 Pocket Computer

Save  
\$29<sup>95</sup>

You Get the Cassette Interface (26-3503) at No Extra Charge When You Buy a TRS-80 PC-1

149<sup>95</sup>



- Great Gift for Students and Engineers
- Program in Easy-to-Learn Pocket BASIC or Use Our Ready-to-Run Cassette Software

**TRS-80 Pocket Computer Model PC-1.** It's an on-the-go problem-solver's best friend—ideal for accountants, businessmen, and engineering and science students. With the cassette interface that you get as a special bonus and a cassette recorder, you can use our ready-to-run software. Add the eleven sale-priced programs shown at right and you can solve technical or engineering problems, analyze statistics, keep track of your financial status, handle real estate—or just have fun! Develop your own applications with the Pocket BASIC language, too. PC-1 has a 1.9K memory, 10-digit accuracy with 2-digit exponents, 15 arithmetic functions, 24-character LCD readout, typewriter-style keyboard with datapad, editing, multiple statements, strings, arrays, and more. Programs and data are retained when power is off. It's palm-sized and weighs less than 6 oz. Includes carry case and batteries. 26-3501 ..... 149.95

**Half Price! Deluxe Carrying Case.** Protects your PC-1 and Interface. Reg. \$14.95. 26-3508 ..... Sale 7.49

## Sale! Save Up to 50% on PC-1 Software

**Personal Finance.** Budget management, electronic checkbook, interest and annuities, metric/English conversion. Reg. \$19.95. 26-3518 ..... Sale 9.88

**Business Finance.** Loans, annuities, bond prices, yields, compound interest, depreciation, and more. Reg. \$19.95. 26-3517 ..... Sale 9.88

**Business Statistics.** Seasonal variation, norm T/F distribution, forecasting, multiple regression and more. Reg. \$19.95. 26-3516 ..... Sale 9.88

**Real Estate.** Annuities, compound interest, depreciation, cash flow analysis, residential purchase analysis. Reg. \$24.95. 26-3510 ..... Sale 12.88

**Surveying.** Leveling, volume, irregular area, closure and more. Reg. \$29.95. 26-3512 ..... Sale 14.88

**Aviation.** Altitude, airspeed, headings and more. Reg. \$24.95. 26-3513 ..... Sale 12.88

**Electrical Engineering I.** Filter, transistor and RF coil design, circuit analysis, more. Reg. \$24.95. 26-3520 ..... Sale 12.88

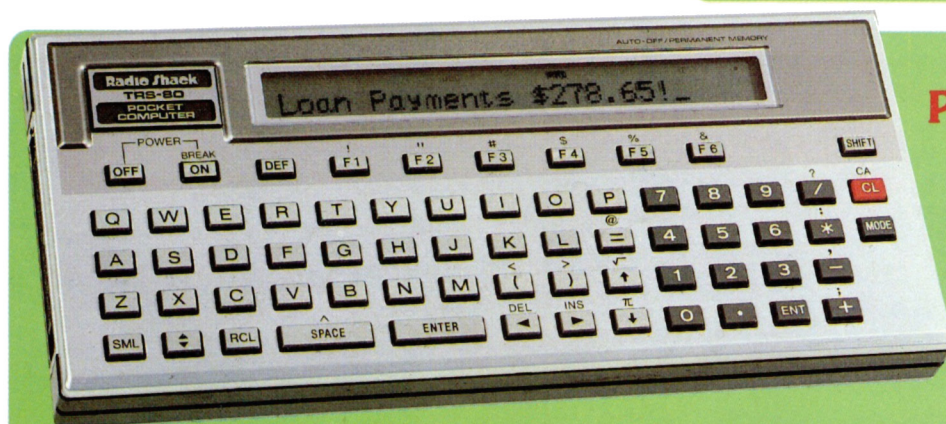
**Civil Engineering.** Simple beam computations, column buckling, ASIC column formulas, stress in cylinders, bolt torque. Reg. \$24.95. 26-3511 ..... Sale 12.88

**Games I.** Fun for the whole family. Reg. \$14.95. 26-3515 ..... Sale 7.49

**Games II.** More family fun. Reg. \$14.95. 26-3523 ..... Sale 7.49

**Math Drill.** Teaches basic skills. Reg. \$14.95. 26-3514 ..... Sale 7.49

Programs require cassette recorder, plus cassette interface or printer/interface.

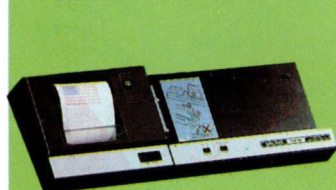


## Our Most Powerful Pocket Computer Ever

279<sup>95</sup>

- Fast Extended Pocket BASIC
- Upper/Lower Case Display
- Fully-Addressable 7 x 156 Dot Matrix Graphics
- 2640-Character User Memory For Programs and Data Storage

**TRS-80 Pocket Computer PC-2.** Get the power and speed of many desktop computers in a unit you can hold in your hand. It's ideal for the demanding professional. Extended Pocket BASIC includes 42 statements, 36 functions and 6 commands, plus 2 dimension arrays, variable length character strings, program merge and more. Typewriter keyboard with datapad includes 18 programmable key functions and 18 user-definable keys. For big jobs, expand with a 4K or 8K RAM plug-in module (at left). Quartz real-time clock. All memory information is retained when power is off. Requires 4 "AA" batteries. 26-3601 ..... 279.95



**PC-2 Printer/Plotter/Cassette Interface.** Print 4-color graphics and alphanumerics. (U.L. listed AC adapter/charger. 26-3605 ..... 239.95



**PC-2 Memory Modules.** For larger, more complex programs. Individual modules are not expandable. **4K.** 26-3615 ..... 69.95 **8K.** 26-3616 ..... 139.95



**PC-2 Printer Carrying Case.** Holds printer (with PC-2 installed) and AC adapter/charger. Keeps manuals, cassettes organized. 26-3608 .. 29.95

When It Comes to Computers—Come to Your Nearby Radio Shack Computer Center

# SAVE \$100 TRS-80® COLOR COM

## All Models on Sale-Now



**Popular 16K "Standard" Model—Reduced 25%**

- Vivid Colors and Exciting Sound
- 16,000-Character Internal Memory
- Expandable ■ Easy Hookup to Any TV

Great for family fun and easy for anyone to use. Just pop in an instant-loading Program Pak™ to battle starships in outer space, fight microbes in inner space, or even drill for oil! But this colorful TRS-80 is much more than a game. It's a powerful *computer* that can solve problems and help you and your child prepare for the computer-oriented future. Expand anytime with more memory, disk drives, a printer. Add a phone modem to bring the latest news and stock market quotes right into your living room! U.L. listed. With entertaining 308-page beginner's manual. 26-3004 ..... Sale 299.95

Reg. 399.95

**299<sup>95</sup>** Less TV

16K Standard Color BASIC

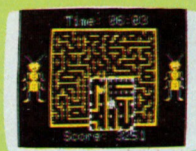
as  
seen  
on TV

**Bring the Family Along and Try it Today!**

## Program Paks Put Your TRS-80 Color Computer to Work or Play Instantly

### A-maze-ing

**NEW! Mega-Bug.** Rapid-action maze game is fun for everyone! Your bug faces 8 to 16 opponents. Joysticks required. 26-3076 ..... 34.95



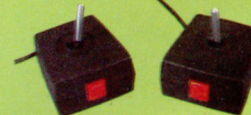
### Be Creative

**NEW! Micro Painter.** Computerized coloring book. Paint samples or draw your own. Joysticks required. 26-3077 ..... 39.95



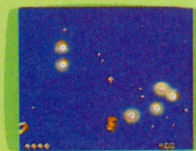
### Joystick Controls

**24<sup>95</sup>** Pair  
Increase speed, add realism to many games. 26-3008, \$24.95 Pr.



### Fight Germs

**NEW! Microbes.** Use your "disinfectant" to shoot antibiotics at nasty germs. 15 skill levels. 26-3085 ..... 24.95



### Court Fun

**NEW! Tennis.** Very realistic! Two skill levels, applause, other sound effects. Joysticks required. 26-3080 ..... 29.95

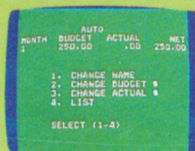


**SALE!**  
**Carry Case**  
Reg. 19.95



**12<sup>95</sup>**

**CUT \$7.** Protects your Color Computer, makes it easy to take along! Padded vinyl, zippered opening, two inside pockets. 26-3007 ..... Sale 12.95



### Plan Budgets

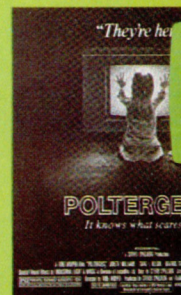
**Personal Finance.** Set up and stay on a budget! 26 categories—car, clothes, food, more. 26-3101 ..... 39.95

### For Kids

**NEW! Clowns and Balloons.** Bounce a "monkey-suited" clown off the net to pop balloons. Joysticks required. 26-3087 ..... 29.95



### NEW! Pol



**Based on The Hit Steven Spielberg Movie**

A Radio Shack exclusive complete three level stand a "ghost" of a Carol Anne! First climb stairs. Third, geist, if you can! 26-3073 .....

# COMPUTER—THE PERFECT FAMILY GIFT!

## Now's the Time to Buy!

**With Powerful Extended BASIC—Up to 20% Off!**

**16K Extended Color BASIC** Reg. 499.95 **399<sup>95</sup>** Less TV

**32K Extended Color BASIC** Reg. 649.95 **549<sup>95</sup>** Less TV

- Produce Detailed Color Graphics
- 255 Tones for Music and Sound
- Screen Resolution to 192 × 256

Ready for more sophisticated applications and high-resolution graphics? Then get the computer that many professionals have selected for personal use—and save! Extended Color BASIC language enables you to produce impressive charts, designs, even animation with simple commands. U.L. listed. With Standard and Extended BASIC manuals.

### 16K Extended BASIC.

26-3002 ..... Sale 399.95

### 32K Extended BASIC.

26-3003 ..... Sale 549.95

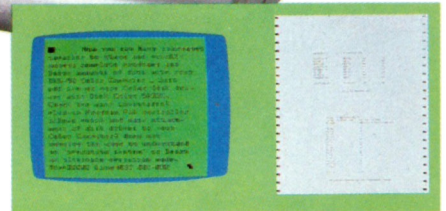
**SPECIFICATIONS.** Microprocessor: 6809E 8-bit. Clock Speed: 0.894 MHz. Keyboard: 53 keys, including up, down, right and left arrows, break, clear. Display: 16 lines of 32 upper case characters. Color Graphics: From 32 × 64, 8 colors to 192 × 256, one color and background. 3 intermediate formats. I/O: 1500-baud cassette, two joystick connectors, RS-232 port. Power: 120VAC, 60 Hz. Size: 3 1/2 × 13 3/4 × 14 3/4".



### New Disk Programs

**Color Disk SCRIPTSIT.** Word processing. Displays upper/lower case. 26-3255 ... 59.95

**Disk Spectulator.** Time-saving planning and forecasting. 26-3256 ..... 59.95



### ntly tergeist



IST



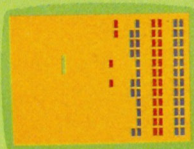
erg **34<sup>95</sup>**

clusive! Unless you  
els of play, you don't  
a chance of rescuing  
c, find clues. Then,  
destroy the polter-

..... 34.95

## Sale! Exciting Color Computer Programs at Up to 50% Off

### Super Bustout



**33% OFF!** Break down not one, but three walls. Arcade-quality fun, up to four players. Joysticks required. Reg. \$29.95. 26-3056 ..... Sale 19.95

### Handyman

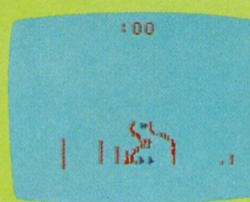
**50% OFF!** Makes do-it-yourself jobs easier. Calculates materials, costs, more. Reg. \$29.95. 26-3154 ..... Sale 14.95

### Diagnostic ROM

**45% OFF!** Tests cassette, RS-232, keyboard, joysticks, printer, more. Reg. \$19.95. 26-3019 ..... Sale 10.95

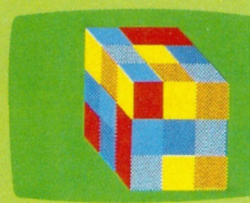
### Skiing—Save \$9

**30% OFF!** Hit the slopes! Race against the clock as you maneuver through the slalom "gates." Joysticks required. Reg. \$29.95. 26-3058 ..... Sale 20.95



### Color Cubes—Save \$10

**33% OFF!** Play the popular cube puzzle on your TRS-80 Color Computer! Recalls up to 255 moves. Joysticks required. Reg. \$29.95. 26-3075 ..... Sale 19.95



### Dino Wars—Save \$9

**30% OFF!** Position your dinosaur to attack your opponent's beast. Dinos roar, scream and squeal. Joysticks are required. Reg. \$29.95. 26-3057 ... Sale 20.95



### Art Gallery—Save \$15

**37% OFF!** Express yourself artistically. Draw detailed color pictures and save them on optional cassette recorder. Reg. \$39.95. 26-3061 ..... Sale 24.95





**Sale! Plotter/Printer  
Now 66% Off!**

**Save  
\$961**

**Reg. 1460.00**

**499<sup>00</sup>**

### Specifications

*Printing Speed:* Average 10 characters per second. *Step Speed:* 667 steps per second. *Step Size:* 0.09525 mm, X&Y axes. *Characters/Line:* 80 characters/7<sup>3</sup>/<sub>10</sub>". *Paper:* 9" roll. *Ballpoint Pen Life:* Approx. 500,000 characters. *Dimensions:* 6<sup>3</sup>/<sub>4</sub> x 16 x 12<sup>3</sup>/<sub>8</sub>". *Power Requirements:* 120VAC, 60 Hz.

**TRS-80 Plotter/Printer.** Take advantage of this tremendous offer and create charts, graphs and alphanumerics with ease! This top-quality plotter lets you program with LPRINT statements to draw an infinite variety of points, lines, curves and geometric figures—as well as standard upper case ASCII text characters. Characters can even be drawn enlarged and/or rotated. Drum plotting mechanism assures extremely smooth and precise control of arc and circle patterns. No ribbon—replaceable ballpoint pen produces precision drawings of any height on a 7<sup>1</sup>/<sub>2</sub>" wide plotting area. Front panel control of pen and paper motion. Standard parallel interface. U.L. listed. 26-1190 ..... Sale 499.00

## "Bargain Table" Sale!

Deep price cuts on closeout, discontinued items and demos! Not all items in every Computer Center. All subject to prior sale. Some items carry the Radio Shack limited warranty.

### Super TRS-80 Model III & I Programs Half-Price!



**Cassette Payroll.** Handles 15 employees. Prints checks and register. Supports fixed-percentage tax. Requires 16K Level II or Model III BASIC. Reg. \$49.95. 26-1504 ..... Sale 24.97

**Versafile.** Files facts using "key words." Locates "most similar" data, too. Requires 32K 1-Disk. Reg. \$29.95. 26-1604 .. Sale 14.97

**Games Pack I.** Checkers, Hamurabi, Draw, Star Pilot, Random Tic-Tac-Toe, Space Taxi. Requires 4K Level I. Reg. \$19.95. 26-1805 ..... Sale 9.97

**Level II BASIC Course Part I.** Includes four cassettes. Requires 16K Level II (Model I only). Reg. \$6.95. 26-2005 ..... Sale 3.47

**Level II BASIC Course.** Interactive self-paced course on advanced Level II BASIC. Requires 16K Level II (Model I only). Reg. \$19.95. 26-2006 ..... Sale 9.97

**Checkers 80.** Competition "forced jump" game with two levels of skill. Requires 16K Level II or Model III BASIC. Reg. \$9.95. 26-1907 ..... Sale 4.97

### Save Up to 40% on Model II Software

**Mailing List System.** Stores up to 3000 names and addresses, and prints address labels. Eight special categories give you flexibility in selecting names for printing or update. Automatically puts listings in alphabetical and zip code order. Rapid access to any listing for update. Easy error correction. Prints five different label sizes with up to five labels a page. Reg. \$79.00. 26-4506 ..... Sale 49.00

**Accounts Receivable, Series I.** An invoicing and monthly statement program that keeps track of current and aged accounts. Features an automatic customer billing option, your choice of open item or balance forward, consolidation for greater capacity, flexible open credit reconciliation, and statement and invoice printing. Reg. \$199.00. 26-4554 ..... Sale 119.00

### Save Up to 50% on TRS-80 Accessories

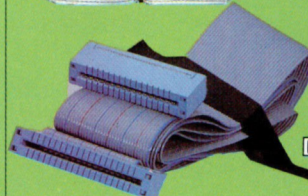


**Dust Covers**  
**A For External Disk Drives.** Reg. \$5.95. 26-502 ..... Sale 2.95

**For Line Printer II or IV.** Reg. \$4.95. 26-504 ..... Sale 2.49

**For CTR-80 Cassette Recorder.** Reg. \$4.95. 26-513 ..... Sale 2.49

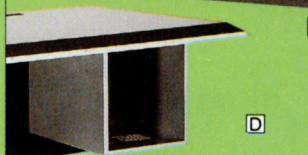
**For Line Printer VIII.** Reg. \$4.95. 26-514 ..... Sale 2.49



**Line Printer II Cable**  
**B Connects Line Printer II to Expansion Interface of a Model I.** Reg. \$29.00. 26-1415 ..... Sale 13.95



**Telephone Interface**  
**C Lets you transfer data over phone.** Just dial number and place headset on interface. Originate/answer. Full or half duplex. FCC registered. Reg. \$199.95. 26-1171 ..... Sale 99.95



**Model III Disk Bay**  
**D Attaches underneath Model III System Desk (26-1305) and holds up to two external disk drives.** Reg. \$29.00. 26-1306 ..... Sale 13.95



**Model I Printer Interface**  
**E Active parallel interface lets you connect your Model I to a printer.** Reg. \$59.00. 26-1411 .. Sale 29.95

# "Take-It-With-You" TRS-80 Terminal

Access Your Office  
Computer and  
Data Networks  
By Telephone

## 995<sup>00</sup>



## NEW!

Telephone  
handset  
not included

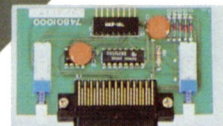
**PT-210 Portable Data Terminal.** Just plug into AC, dial a phone number, and place the telephone handset into the built-in acoustic coupler. You're now ready to transmit and receive data from virtually any modem-equipped computer—micro, mini, or mainframe! You can also prepare reports on the spot with the built-in thermal printer. It's quiet, so you can use it during presentations to verify stock numbers, confirm inventory levels, even enter orders directly from the field. The 67-character keyboard has the feel and layout of a standard typewriter—and thirteen keys arranged in a calculator format make for quick numeric entry. Totally enclosed in an attache-type case, the PT-210 weighs just 15 pounds! U.L. listed. FCC registered. 76-1001 . . . 995.00

**Specifications.** *Speed:* Switch selectable; 110 baud—11-bit/char., 300 baud—10-bit/char. *Mode:* Full or half-duplex. *Code:* ASCII. *Line Status:* On line/local. *Line Buffer:* 48 char. *Compatibility:* Bell 103A or equivalent. *Print Speed:* 50 char./sec. *Print Type:* 5x7 matrix, lower case characters translated to upper case. *Dimensions:* 5 x 15 1/2 x 14 1/2". *Power:* 120VAC, 60 Hz, 75 Watts.

**A RS-232C Interface Module.** Connect your PT-210 directly to your office computer with a standard RS-232C cable—no modem is required. PT-210 functions as a desktop printer-terminal to the host computer. Cable not included. 76-1002 . . . 69.95

**B Deluxe Carrying Case.** Protective vinyl case with pockets for extra paper. 76-1010 . . . 24.95

**Thermal Paper.** 8 1/2" wide, 100-ft. roll. 76-1003 . . . 6 rolls/24.95



## NEW!

## High-Speed 300/1200 bps Direct Connect Modem Saves Money!

## 699<sup>00</sup>

- Connects to Phone Line
- Compatible With All TRS-80s With an RS-232C Interface

**TRS-80 DC-1200 Modem.** A must for anyone who regularly has big transmissions or receptions to handle. Businesses and individuals who use their computers extensively from remote locations will find the DC-1200 cuts phone time dramatically. It's also ideal for people who use electronic information services—like Dow Jones News/Retrieval®, WESTLAW™, and CompuServe®—during business hours when long distance rates are highest. It's always in "Auto Answer," so if a host computer calls, you begin receiving information automatically. The modem automatically adjusts to the incoming baud rate. To originate, just set the baud rate to match the host or service, run your communication software, and place the call. U.L. listed. FCC registered. 76-1005 . . . 699.00

**Specifications.** *Line Signals:* Low Speed—frequency shift keying; High Speed—differential phase-shift keying. *Compatibility:* Low Speed—Bell 103/113; High Speed—Bell 212A. *Sensitivity:* -48dBm. *Dimensions:* 1 3/4 x 6 3/8 x 11 1/4". *Power:* 120VAC, 60Hz.

**Model III/DT-1 Cable.** Male DB25 to DB25. 26-1408 . . . 19.95

**Model II/16 Cable.** Male DB25 to DB25. 26-4403 . . . 39.95

**Color Computer Cable.** 4-pin DIN to DB25. 26-3014 . . . 19.95

**Duplex Jack.** Connects telephone and modem to modular wall jack. 279-357 . . . 6.95

**Multi-Line Controller.** Connects modem to multi-line (5 phone) office system. Pushbutton line selection. 43-233 . . . 39.95

**Installation  
Accessories for DC-1200**

Depend on Your Radio Shack Computer Center—We Service What We Sell!

# New! SuperSCRIPSIT™ for the TRS-80



## Our Most Versatile Word Processing Program Ever for Model III and I

# 199<sup>00</sup>

- Write and Edit on Your Model III Computer Screen
- Print Correction-Free Business Documents

Now full-featured word processing software is more affordable than ever. But you don't have to be a computer expert to start using it. The instruction manual is clear and easy to follow, and "Help" screens are available at the touch of a key. There's even an audio cassette instruction course included to quickly make you a SuperSCRIPSIT expert.

**Versatile.** What can you do with SuperSCRIPSIT? Almost anything. Suppose you're a manager with a report to prepare. Just insert the SuperSCRIPSIT disk and start writing. You can easily write, rewrite, change line spacing, margins and tab settings, align columns of figures, then, depending on your printer, include superscripts for footnote references and subscripts for formulas, add emphasis with boldface, underline and double-underline. You can even move, duplicate, delete or change blocks of copy with just a couple of keystrokes.

**Advanced Features.** You can use global search and replace to track down every reference to a word you want changed. You can recall "boilerplate" copy saved in user-defined keys. You don't have to worry about pagination—SuperSCRIPSIT handles it automatically—along with page numbering in a "header" or "footer" if you want it. And your documents can be as large as available disk space. SuperSCRIPSIT also supports proportional-spaced printing to give your documents even left and right margins.

**Save Time and Effort.** SuperSCRIPSIT is also ideal for the small business owner who wants to send out letters to customers. You can quickly prepare a form letter, then merge it with names and addresses from either SuperSCRIPSIT or our Profile III Plus software (Model III only—requires 2 disk drives)—and create hundreds of "personally-addressed" letters.

**SuperSCRIPSIT Word Processing Program.** Requires 48K 1-Disk Model III or 48K 2-Disk Model I. 26-1590 ..... 199.00

## SuperSCRIPSIT System

# 3582<sup>00</sup>

Ready  
To Use

- Everything You Need at One Low Price
- Lease for Less Than \$126\* per Month

Move into full-featured word processing with this excellent office system. It's ideal for the manager, small business, church, club or writer—anywhere quality output and an affordable price are of prime concern. It includes a 48K 1-Disk Model III (26-1065), SuperSCRIPSIT (26-1590), letter-quality DWP-410 Daisy Wheel Printer (26-1250) and cable (26-1401).

\*Plus Applicable Tax

# New! Profile III Plus Electronic Filing

## Find the Information You Need Fast ... Without Searching File Cabinets!

# 199<sup>00</sup>

- Keeps Records Organized, Available and Secure
- Saves Time for Clerks, Secretaries and Managers

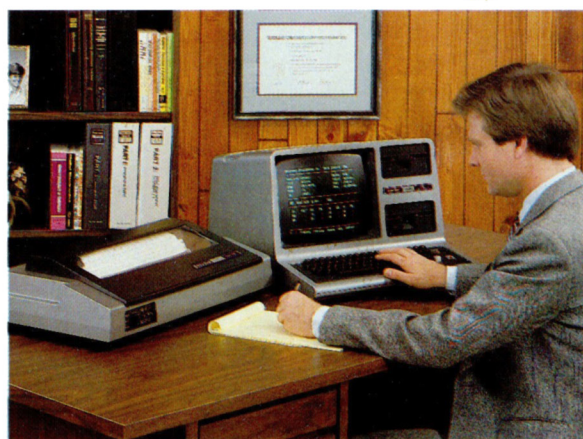
Get this fast, efficient data base manager for your Model III desktop computer and save yourself time, effort and money. Profile III Plus puts the records you need at your fingertips in the form you want—immediately.

**Simple to Set Up and Use.** You can customize Profile III Plus to your present filing system by creating the "screens" (data entry formats), reports and mailing labels that fit your needs. Need a customer sales report broken down by item, time of year, salesman, region and customer? Profile III Plus can have it for you in seconds—and give you a perfect printout if you have a printer.

**Incredible Search Capability and Speed.** With Profile III Plus you can store up to 99 "fields" (items in a particular record)—and you can use up to 36 of these fields at once as criteria in searching these records. The indexing feature finds the information you're looking for quickly and the math feature lets you recalculate and update your data. Passwords provide security for confidential information.

**Prepare Form Letters.** Need to get a form letter out to customers or suppliers, church or club members? Merge your Profile III Plus mailing list with a SuperSCRIPSIT-generated form letter and print out hundreds of custom addressed letters in minutes. And it can pass data to our VisiCalc® planning software.

**Profile III Plus Electronic Filing Program.** 48K 2-Disk Model III only. 26-1592 ..... 199.00



## Profile III Plus System

# 3728<sup>00</sup>

Ready  
To Use

- Add Software for Other Applications
- Lease for Less Than \$131\* per Month

This complete system includes 48K 2-Disk Model III computer (26-1066), Profile III Plus software (26-1592), dot-matrix DMP-400 business printer with 13.2" line (26-1251) and printer cable (26-1401).

\*Plus Applicable Tax

# New! Hard Disk Drive for Model III

Primary Hard Disk System

**2495<sup>00</sup>**

Secondary Hard Disk System

**1995<sup>00</sup>**

- High-Speed Access to 5 Million Characters of Stored Data
- Total of Four Hard Disks Allows 20 Megabytes of On-Line Storage
- Fully Compatible With Most Existing Model III\* Software



Ideal for inventory control and large data bases. The advanced, user-friendly operating system enhances our familiar TRSDOS with superior features. User's manual included. U.L. listed.

**Primary Drive.** Includes Hard Disk Operating System with BASIC. 26-1130 . . . 2495.00

**Secondary Drive.** Installation required (not included). 26-1131 . . . . . 1995.00

\*Contact your store for availability information on the hard disk system for Model I.

## Model III/Hard Disk Office System

**5578<sup>00</sup>**

Access 5 Megabytes Of Data

Everything you need to get an advanced hard-disk system working for you. Just add our software—such as accounting, inventory control, payroll, financial planning or word processing—and you're ready to go. This complete system includes 48K 1-Disk Model III (26-1065), Primary Hard Disk System (26-1130), DMP-400 business line printer (26-1251) and Printer Cable (26-1401).



## Model III—Ideal Desktop Computer for the Manager

48K 2-Disk  
With RS-232C

**2295<sup>00</sup>**

48K 1-Disk  
Without RS-232C

**1849<sup>00</sup>**

Improve your productivity! Just add ready-to-run software for "spreadsheet" planning, electronic filing, word processing and much more. You can choose a Model III with one or two built-in double-density mini-disk drives, each with 184,000 characters of storage. The one-piece cabinet contains the 12" high-resolution monitor, which displays upper and lower case characters, a 65-key typewriter keyboard with datapad, and a parallel printer interface. Includes TRSDOS Operating System, Disk BASIC, owner's manual and programming manual. U.L. listed.

**48K 2-Disk.** 26-1066 . . . . . 2295.00

**48K 1-Disk.** 26-1065 . . . . . 1849.00



Open a Radio Shack/CitiLine Account—See Page 16 for Details

# TRS-80 Accessories—Perfect for Giving!

**46% Off Space-Saver Desk—  
A 'Gift' for Your TRS-80**

**Save \$30<sup>05</sup>**

Reg. 65.00 **34<sup>95</sup>**

Sensational value! Ideal for the TRS-80 Color Computer or Model III. Steel frame, leveler feet, woodgrain vinyl veneer top. 27 x 32<sup>3</sup>/<sub>4</sub> x 23<sup>3</sup>/<sub>4</sub>". Unassembled. 26-1307 . . . . . Sale 34.95

Computer systems not incl.

**50% Off! Plug 'n Power™ Controller  
Manages Lights and Appliances**

**Save \$20**

Reg. 39.95 **19<sup>95</sup>**



**For Color Computer, Models I or III**

Use your TRS-80 to control household lights and appliances 'round the clock. Sends on/off and dimmer commands through AC wiring to plug-in remote modules (sold separately). With software, instructions. U.L. listed. 26-1182 . . . . . Sale 19.95

## Auto-Control Power Strip



**NEW!**

**69<sup>95</sup>**

**Built-In Two-Stage  
Transient Protector**

**SW-301.** Really convenient! Automatically turns on up to five peripherals when you power up your Model II, III or Model 16. 3-pin grounded outlets. Fuse protected. 2<sup>3</sup>/<sub>4</sub> x 3<sup>1</sup>/<sub>2</sub> x 4". U.L. listed. 26-1429 . . . . . 69.95

## Bulk Tape Eraser

**15<sup>95</sup>**

**Lets you  
Erase Disks  
and Tapes  
in Seconds!**



Quickly and completely erases computer floppy disks, plus cassette, 8-track and open-reel tapes. (Not for metal tapes). U.L. listed. 44-232 . . . . . 15.95

## Screen Cleaner Kit

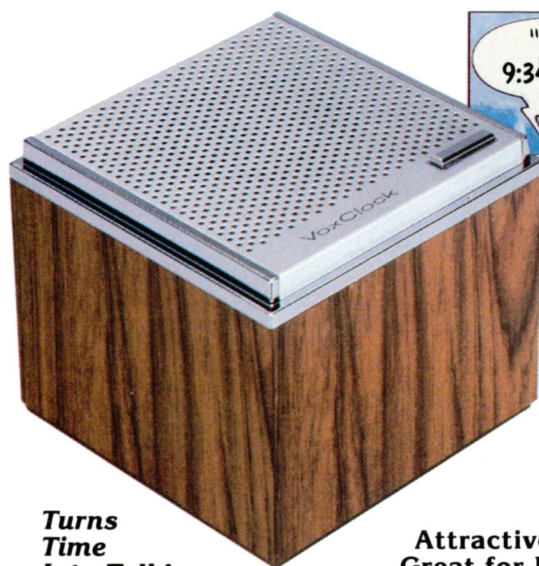
**Anti-Static**



**6<sup>95</sup> NEW!**

Cleans safely, adds anti-static protection. With 50 pre-wet wipes, lint-free cotton cloth, instructions. 26-1318 . . . . . 6.95

**17% Off! This Unique Gift Actually  
TELLS You Precise Quartz Time**



**Save  
\$10**

Reg. 59.95

**49<sup>95</sup>**

**Turns  
Time  
Into Talk!**

**Attractive, Compact—  
Great for Desk or Table**

Just press the button and a VOICE tells you the time. Also announces time on the hour, if desired. Inside our exclusive VoxClock™ is an accurate quartz-controlled timekeeper, plus an electronic speech synthesis circuit. No moving parts! Easy to set with recessed controls on the bottom. Select high or low volume, hourly time announcement on or off. Simulated wood grain, accented by a brushed aluminum top with chromed edges. 2<sup>3</sup>/<sub>8</sub> x 2<sup>7</sup>/<sub>8</sub> x 2<sup>7</sup>/<sub>8</sub>". Requires three "AA" batteries. An excellent gift, and especially nice for someone with impaired vision. 63-902 . . . . . Sale 49.95

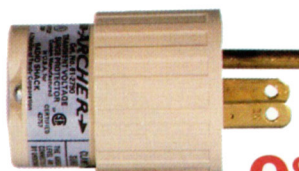
## Mini Amplifier With Built-In Speaker

**11<sup>95</sup>**

It's perfect for Model I/III programs such as Dancing Demon and Paddle Pinball that require an audio amplifier. Many other uses. Features high-gain IC circuit, volume control, on/off switch, jacks for input and optional earphone. 2<sup>1</sup>/<sub>2</sub> x 3<sup>7</sup>/<sub>8</sub> x 1<sup>3</sup>/<sub>4</sub>". Requires 9-volt battery. 277-1008 . . . . . 11.95



## Plug-In Voltage Spike Protector



**9<sup>95</sup>**

**Protects TVs, Computers,  
Solid-State Equipment**

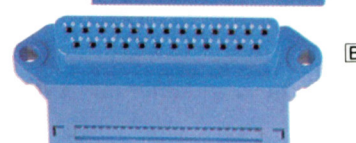
Nothing to wire! Absorbs excess spike energy, allows only a safe voltage level to reach equipment. U.L. listed. 61-2790 . . . . . 9.95

## D-Sub Connectors

**A**



**B**



**4<sup>99</sup>  
Each**

**A D-Submini 25 Male.** For RS-232C bus. 276-1559 . . . 4.99

**B D-Submini 25 Female.** Ideal for cable extensions. 276-1565 . . . . . 4.99

# Send Holiday Greetings—Electronically!

**Cordless-Handset Telephone Lets You Walk—And Talk!**

**99<sup>95</sup>**

**Use on Desk—or Fits Over Standard Modular Wall Jack**

- 50-Foot Range
- Installs in Seconds
- Built-In Rechargeable Nickel-Cadmium Batteries



**Radio Shack ET-350A.** Real convenience at an amazing low price. Works just like your regular phone. The big difference is that you're not restricted by a cord! Features one-button Auto-Redial of the last number called, Universal Dial System for pushbutton convenience even on rotary-dial lines, privacy/mute button, electronic tone ringer. Automatic recharger is built into base unit. U.L. listed. Come in and try it! 43-266 ..... 99.95

**Our Best Portable Phone! Cordless, Computerized**

**199<sup>95</sup>**

**Make and Take Calls Up to 500 FEET From the Base Unit!**



**Cordless Intercom, Too! Just Plug Regular Phone Into Base**

**Radio Shack ET-330.** Built-in microprocessor for easy operation and extra features! A tone indicates when you are nearing the range limit. Has one-button memory dialing of two 10-digit numbers. Programmable security code prevents other cordless phones from accessing your line. One-button Auto-Redial of busy or unanswered numbers, Universal Dial System, built-in rechargeable batteries and more. U.L. listed. 43-267 ..... 199.95

**Voice Activated, Dual-Cassette Answerer with Remote Control**

**179<sup>95</sup>**

**Play Back Messages Through Any Phone While You're Away!**



**DU6FONE® TAD-114.** Voice-actuated system hangs up when caller is finished, or when selectable 30-second or 3-minute limit is reached. Fast-forward and audible review help you find important messages quickly. When you're at home, Call Monitor lets you determine who's calling before answering. Will record both sides of conversations. Built-in condenser mike. Pocket-size remote requires 9-volt battery. U.L. listed. 43-314 ..... 179.95

**Deluxe Telephone/Dialer/Amplifier Switchable Tone or Pulse Dialing**

**139<sup>95</sup>**

- Auto-Dialer With 32-Number Memory
- On-Hook Dialing And Two-Way Amplifier for "Hands-Free" Calling



**DU6FONE-160.** The "everything" phone! Stores up to 32 frequently called numbers of up to 28 digits each for instant one-button dialing. Selectable tone/pulse dialing works with any phone system and lets you access tone-dial services such as bank-by-phone and alternative long-distance from rotary-dial lines. Backup system protects memory in case of power failure (requires four "AA" batteries). U.L. listed. 43-293 ..... 139.95

**Financial Calculator**

**29<sup>95</sup>**



**With Billfold Carrying Case**



**Auto Power-Off Saves Battery**

**Radio Shack EC-4051.** Great stocking stuffer! Does compound interest, loan schedules, annuities, more. 10-digit liquid crystal display. With manual and battery.  $5\frac{1}{4} \times 2\frac{13}{16} \times 5\frac{5}{16}$ ". 65-995 ..... 29.95

**Micro-Cassette Recorder**

**69<sup>95</sup>**

- Records Up to 2 Hours
- Cue/Review
- Tape Counter
- Earphone
- $5\frac{1}{4} \times 2\frac{1}{4} \times 1"$



**Realistic® Micro-10.** Features electret condenser mike, end-of-tape Auto-Stop, built-in charger for optional nickel-cadmium batteries. Requires two "AA" batteries or AC adapter. 14-1016 . 69.95  
**MC-60 Micro-Cassette.** 44-640 ..... 3.49  
**U.L. Listed AC Adapter.** 273-1435 .. 4.95

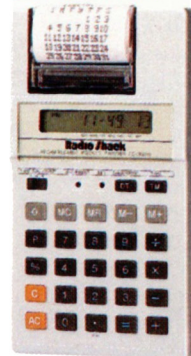
**Portable LCD Printing Calculator With Clock**

**69<sup>95</sup>**


**Complete!**



**Comes With Case, U.L. Listed AC Adapter/Charger and Rechargeable Batteries**



**Radio Shack EC-3008.** A multi-purpose BARGAIN! 10-digit display shows time, date or calculations. You can even print a monthly calendar of any year from 1901 to 2099. Print on/off switch.  $5 \times 2\frac{13}{16} \times 3\frac{3}{4}$ ". With sample roll of paper. 65-665 .. 69.95  
**Thermal Paper.** Five rolls. 65-711 ..... 2.19



# Radio Shack

## COMPUTER CENTER


A Division of Tandy Corporation  
P.O. Box 2625, Fort Worth, Texas 76113

**BULK RATE  
U.S. POSTAGE  
PAID  
Radio Shack  
A Div. of Tandy Corp.**

### Introducing the CitiLine Credit Card

No fee required! Simply fill out a CitiLine application card that's available at any Radio Shack Computer Center or participating Radio Shack store. Upon approval by Citibank, often within the hour, you can take your purchases home. Radio Shack/CitiLine may be used to finance any initial purchase of \$225 or more, and subsequent purchases of \$100 or more. Payments can be spread over 24 months, or paid in full anytime. Come in, get details, and increase your buying power today!

### The Newest, Most Exciting Credit Card Around for Your Major Radio Shack Purchases!



**ALABAMA**  
BIRMINGHAM 2428 Green Springs Hwy., (205) 945-0792  
HUNTSVILLE 1400 N. Memorial Pkwy., (205) 536-1581  
MOBILE 405 Bel-Air Blvd., (205) 471-1617  
MONTGOMERY #24 Union Square S/C, (205) 271-1500

**ARIZONA**  
PHOENIX 10233 Metro Pkwy. E., (602) 861-1124, 4301 N. 7th Ave., (602) 277-3031  
SCOTTSDALE 2525 N. Scottsdale Rd., (602) 990-2241  
TEMPE 83 E. Broadway, (602) 894-2065  
TUCSON 5622 E. Broadway, (602) 748-0101

**ARKANSAS**  
LITTLE ROCK Town & Country S/C, University & Asher, (501) 568-5694

**CALIFORNIA**  
ANAHEIM 509 Katella, (714) 776-9540  
BAKERSFIELD 2018 Chester Ave., (805) 323-8074  
BERKELEY 1922 Grove St., (415) 848-9170  
BEVERLY HILLS 8500 Wilshire Blvd., (213) 659-8870  
CANGA PARK 6371 Topanga Canyon, (213) 347-9800  
CARMICHAEL 6305 Fairbairn Blvd., (916) 484-6815  
CHICO 1834 Mangrove Ave., (916) 894-0101  
CHULA VISTA 1201 3rd Ave., (714) 420-3810  
CITRUS HEIGHTS 7405 Green Back Ln. at San Juan, (916) 723-5183, 969-8752  
DOWNEY 8031 Florence Ave., (213) 927-7882  
ESCONDIDO 347 W. Mission Ave., (714) 791-6032  
FREMONT Fremont Hub, 39114 Fremont, (408) 790-1112  
FRESNO Princeton S/C, 2721 N. Blackstone Ave., (209) 225-5551  
GARDEN GROVE 12821 Knott St., (714) 891-1160  
GLENDALE 236 N. Brand Blvd., (213) 246-9310  
HAYWARD 20942 Mission Blvd., (415) 278-2888  
LAKEWOOD 5830 Lakewood Blvd., (213) 920-9671  
LA MESA 5346 Jackson Dr., (714) 460-3610  
LONG BEACH 2119 Bellflower Blvd., (213) 597-3377  
LOS ANGELES 740 S. Olive St., (213) 629-2455  
MONTCLAIR 5237 Arrow Hwy., (714) 625-1541  
MONTREY 484 Washington St., (408) 375-8430  
MOUNTAIN VIEW 1933 El Camino Real W., (415) 961-0542  
OAKLAND 1733 Broadway, (415) 763-3183  
PASADENA 575 S. Lake Ave., (213) 449-5424  
RIVERSIDE 3844 La Sierra Ave., (714) 689-0340  
SACRAMENTO 4749 J. St., (916) 454-3287  
SAN BERNARDINO 764 Inland Center Dr., (714) 884-6871  
SAN DIEGO 3082 Claremont Dr., (714) 276-6050, 3902 El Cajon Blvd., (714) 280-0227  
SAN FRANCISCO One Market Place, (415) 777-9810, 2920 Geary Blvd., (415) 221-8716  
SAN JOSE 1228 S. Bascom Ave., (408) 297-2603  
SAN MATEO 3180 Campus Dr., (415) 573-8601  
SANTA ANA 2320 S. Fairview St., (714) 966-2787  
SANTA BARBARA 441 State St. A-1, (805) 967-4538  
SANTA FE SPRINGS 14138 East Firestone Blvd., (213) 921-0702  
STOCKTON College Sq. S/C, 963 West March Lane, (209) 957-3676  
TARZANA 1845 Ventura Blvd., (213) 343-1696  
TORRANCE 3640 Sepulveda at Hawthorne, (313) 373-0306  
VENTURA 4005 E. Main St., (805) 654-0196  
WEST COVINA 2516 E. Workman St., (213) 915-5791

**COLORADO**  
BOULDER Arapahoe Plaza, 3550 Arapahoe, (303) 443-7142  
DENVER SPRINGS 4341 N. Academy, (303) 593-7500  
DENVER 8001 E. Quincy, (303) 770-1362, Green Briar Plaza, 7075 Pecos, (303) 428-6787  
LAKEWOOD 2099 Wadsworth Blvd., (303) 232-6277

**CONNECTICUT**  
EAST HAVEN 51 Frontage Rd., (203) 467-8864  
FAIRFIELD 1196 Kings Hwy. & Rt., (203) 255-6099  
HARTFORD The Hartford Bldg., 942 Main St., (203) 549-5717  
MANCHESTER 228 Spencer St., (203) 649-8102  
NORWALK Rt. 7-345 Main Ave., (203) 846-3418  
ORANGE Woolco S/C, 538 Boston Post Rd., (203) 795-1291  
WATERBURY 105 Bank St., (203) 573-8800  
WATERFORD 122 Boston Post Rd., (203) 442-0716  
WEST HARTFORD 39 S. Main St., (203) 523-4283

**DELAWARE**  
DOVER Edgemoor Shopping Ctr., Rt. #13, (302) 734-5223  
WILMINGTON 3847 Kirkwood Hwy., (302) 999-0193

**DISTRICT OF COLUMBIA**  
WASHINGTON 1800 M St. NW, (202) 622-3933

**FLORIDA**  
ALTAMONTE SPRINGS 766 B. East Altamonte Dr., (305) 339-1313  
CLEARWATER 2460-D US 19 North, (813) 797-3223  
DAYTONA BEACH Volusia Plaza, (904) 255-5909  
FT. LAUDERDALE 4368 N. Federal Hwy., (305) 762-6797  
FORT MYERS Edison Mall, (813) 939-3454  
GAINESVILLE 3315 Archer Rd., (804) 375-7063  
HOLLYWOOD 429 S. State Rd. #7, (305) 966-4382  
JACKSONVILLE 8252 Arlington Expressway, (904) 725-2594  
LAUDERDALE Lakes 4317-25 N. State Rd. 7, (305) 486-2240  
MIAMI 9459 S. Dixie Hwy., (305) 667-2316, 1601 Biscayne Blvd., (305) 374-6433, 15-SE, 2nd. Ave., (305) 374-7310, 20761 S. Dixie Hwy., (305) 235-218  
N. MIAMI BEACH The Promenade, 1777 N.E. 163rd St., (305) 940-6887  
ORLANDO 1238 E. Colonial Dr., (305) 894-0570  
ST. PETERSBURG 3451 66th St. N., (813) 381-2366  
SARASOTA 5251 S. Tamiami Tr. Hwy. #11, (813) 923-4721  
TALLAHASSEE 2529 S. Adams, (904) 222-4440  
TAMPA 4555 W. Kennedy, (813) 879-7470, 1825 E. Fowler Ave., (813) 971-1130  
W. PALM BEACH 2271-A Palm Beach Lakes Blvd., (305) 683-3100

**GEORGIA**  
AUGUSTA 3435 Wrightsboro Rd., (404) 738-5998  
ATLANTA 2108 Henderson Mill, (404) 539-9888, 49 W. Paces Ferry, (404) 231-9604, Akers Mill S/C, 2937 Cobb Parkway NW, (404) 955-5235, 113 Peachtree Tr., (404) 223-5904  
COLLEGE PARK 5309 Old National Hwy., (404) 761-3055  
DORAVILLE 5697 Buford Hwy., (404) 458-2691  
SAVANNAH Chatham Plaza, 7865 Abercorn St., (912) 355-6074

**IDAHO**  
BOISE 691 S. Capitol Blvd., (208) 344-5450

**ILLINOIS**  
AURORA 890 North Lake St., (312) 844-2224  
CHICAGO 4355 S. Archer Ave., (312) 776-7617, CNA Plaza, 309 S. Wabash, (312) 922-0536, 72 West Adams, (312) 236-7262  
ELSTON PARK 724 W. Grand Ave., (312) 452-7500  
FAIRVIEW HEIGHTS 44 Market Place, (618) 398-6410  
HOMERIDGE/GLENWOOD 329 Glenwood Lansing, (312) 758-0440  
LA GRANGE One S. LaGrange Rd., (312) 482-3484

**LIBERTYVILLE** 1350 S. Milwaukee Ave., (312) 367-8230  
**LOMBARD** 4 Yorktown Center, (312) 629-5350  
**NILES** 8349 Golf Rd., (312) 470-0670  
**OAK LAWN** 4815 W. 95th St., (312) 425-9130  
**PEORIA** 4125 N. Sheridan Rd., (309) 685-7056  
**ROCKFORD** North Town S/C, 3600 N. Main St., (815) 282-1001  
**SCHAUMBURG** 651 Mall Dr., (312) 884-8600  
**SPRINGFIELD** Sherwood Plaza, 2476 Wabash, (217) 787-3066

**INDIANA**  
EVANSVILLE 431 Diamond Ave., (812) 426-1715  
FT. WAYNE 747 Northcrest S/C, (219) 482-9547  
GRIFFITH 208 W. Ridge Rd., (219) 838-3000  
INDIANAPOLIS 6242 E. 82nd St., Castleton Plz., (317) 849-6896, Speedway Plaza, 6129 B Crawfordville, (317) 244-2221, 10013 E. Washington St., (317) 896-4887  
TERRE HAUTE 3460 U.S. Hwy. 41 S., (812) 234-3212

**IOWA**  
DAVENPORT 616 E. Kimberly Rd., (319) 386-3457  
DES MOINES 7660 Hickman Rd., Shenwood Forest S/M, (515) 270-0193

**KANSAS**  
OVERLAND PARK 8619 W. 95th, (913) 642-1301  
TOPEKA White Lakes Plaza, West Tower, 3715 Plaza Dr., (913) 267-6420  
WICHITA 2732 Blvd. Plaza S/C, (316) 681-1212

**KENTUCKY**  
FLORENCE 7727 Mall Rd., (606) 371-2811  
LEXINGTON 2909 Richmond Rd., (606) 269-7321  
LOUISVILLE 2900 Taylorsville Rd., (502) 459-9901

**LOUISIANA**  
BATON ROUGE 7007 Florida Blvd., (504) 828-5260  
HOUMA 2348 W. Park Ave. Hwy. 241, (504) 873-7713  
LAFAYETTE University Square at Congress Blvd., (318) 235-6177  
METAIRIE 3750 Veterans Hwy., (504) 454-3681  
NEW ORLEANS 327 St. Charles Ave., (504) 523-6408  
SHREVEPORT 1545 Line Ave., (318) 221-5125

**MAINE**  
BANGOR Maine Square, (207) 945-6491

**MARYLAND**  
BALTIMORE 7942 Belair Rd., Punt Hill Plaza, (301) 882-9583, 115 N. Charles St. at Lexington, (301) 539-7251  
CATONSVILLE One Mile West S/C, 6600 B. Balt. Nat'l. Pike, (301) 788-3277  
FREDERICK Shoppers World, Rt. 40W, (301) 695-8440  
NEW CARROLLTON-LANHAM 7949 Annapolis Rd., (301) 459-8030  
PASADENA 8120 Ritchie Hwy., (301) 544-2352  
ROCKVILLE Congressional Plaza, 1673 Rockville Pike, (301) 984-0424  
SALISBURY Shoppers World S/C, Rt. 50, (301) 546-9223  
TOWSON-LUTHERVILLE Yorktown S/C York Rd. at Ridgely Rd., (301) 561-2001

**MASSACHUSETTS**  
BOSTON 730 Commonwealth Ave., (617) 739-1704, 111 Summer St., (617) 542-0361  
BRAINTREE South Shore Plaza, 250 Granite St., (617) 848-9290  
BROCKTON 675 Belmont, (617) 583-2270  
BURLINGTON Crossroads Plaza, Rt. 3 S., (617) 229-2850  
CAMBRIDGE Harvard Square, 28 Boylston St., (617) 354-7694  
CHESTNUT HILL 200 Boylston St., (617) 969-2031  
HATFIELD 1400 Worcester Rd., (617) 875-8721  
SAUGUS 343 Broadway, (617) 233-4985  
SPRINGFIELD 1985 Main St., Northgate Plz., (413) 732-4745  
WORCESTER Lincoln Plaza, (617) 852-8844

**MICHIGAN**  
ANN ARBOR 2515 Jackson Rd., (313) 761-6266  
BIRMINGHAM 3624 W. Maple Rd., (313) 647-2151  
DETROIT DOWNTOWN 1559 Woodward Ave., (313) 961-6855  
FLINT G3298 Miller Rd., Yorkshire Plaza, (313) 732-2530  
GRAND RAPIDS 3142 28th St. SE., (616) 957-2040  
KALAMAZOO 25 Kalamazoo Center, (616) 343-0780  
LANSING 2519 S. Cedar St., (517) 372-1120  
PLAINFIELD North Kent Mall, (517) 644-5538  
LIVONIA 33470 W. 7 Mile Rd., (313) 476-6800  
ROSELAND 31873 Gratiot Ave., (313) 296-6210  
SOUTHFIELD 17651 West 12 Mile Rd., (313) 569-1027  
TROY Oakland Plaza, 322 John R. Rd., (313) 585-3900

**MINNESOTA**  
BLOOMINGTON 10566 France Ave. S., (612) 884-1841  
GOODYEAR VALLEY Golden Valley S/C, (612) Olson Memorial Hwy., (612) 542-8471  
ST. PAUL 6th & Wabasha, (612) 291-7230

**MISSISSIPPI**  
JACKSON 979 Ellis Ave., (601) 352-5001

**MISSOURI**  
DES-PERES 11960 Manchester Rd., (314) 965-5911  
FLORISSANT 47 Florissant Oaks S/C, (314) 921-7722  
INDEPENDENCE 1325 S. Noland Rd., (816) 254-4070  
KANSAS CITY 4025 N. Oak Tr., (816) 455-3381  
ST. ANN 10472 St. Charles Rock Rd., (314) 428-1340  
SPRINGFIELD 2684 S. Glenstone, (417) 883-4320

**NEBRASKA**  
OMAHA 3006 Dodge St., (402) 346-4003

**NEVADA**  
LAS VEGAS Commercial Center, 926 E. Sahara #31-B, (702) 731-3956  
RENO 3328 Kietzke Lane, (702) 853-6232

**NEW HAMPSHIRE**  
MANCHESTER Hampshire Plaza, 1000 Elm St., (603) 625-4040

**NEW JERSEY**  
BRIDGEWATER 1472 U.S. Highway 22 East, (201) 469-3232  
E. BRUNSWICK 595 A Rt. 18, (201) 238-7142  
E. HANOVER Rt. 10, Hanover Plaza, (201) 884-1200  
LAWRENCEVILLE Rt. 1 & Texas Ave., (609) 771-8113  
NEWARK 585 Broad, (201) 622-1339  
NORTHFIELD 322-24 Tilton Rd., (609) 645-7676  
PARAMUS 175 Rt. 17 S., (201) 262-1920  
SPRINGFIELD Rt. #22 Center St., (201) 467-9827  
VORHEES 35 Eagle Plaza, (908) 346-0600

**NEW MEXICO**  
ALBUQUERQUE 2108 San Mateo NE., (505) 265-9587

**NEW YORK**  
ALBANY Shoppers Pl., Wad Rd., (518) 459-5527  
BAYSHORE 1751 Sunnyside Ave., (516) 866-1800  
BETHPAGE 422 N. Wantagh Ave., (516) 822-6403  
BUFFALO 839 Niagara Falls Blvd., (716) 837-2590  
FRESH MEADOWS 187-12 Horace Harding Exp., (212) 454-1075

**JOHNSON CITY** Giant Shopping Center, Harry L. Drive, (807) 729-6312  
**KINGSTON** Kings Mall, Rt. 9W, (914) 336-6262  
**MELVILLE** TSS Mall, Rt. 110, (516) 673-4646  
**NEWBURGH** Zayre Plaza, Rt. #17K, (914) 561-2960  
**NEW ROCHELLE** 242 North Ave., (914) 636-0700  
**NEW YORK** 385 Fifth Ave., (212) 889-1345, 139 E. 42nd St., (212) 953-6053, 19 W. 23rd St., (212) 691-1861, 347 Madison Ave., (212) 867-8650  
**NIAGARA FALLS** Pine Plaza, 8351 Niagara Falls Blvd., (716) 283-2041  
**REGO PARK** 97-77 Queens Blvd., (212) 897-5200  
**ROCHESTER** 3000 Winton Rd., (716) 244-6400  
**SCARSDALE** 365 Central Park Ave., (914) 472-2520  
**SPRING VALLEY** White House Center, 88 W. Rt. 59, (914) 425-2828  
**STATEN ISLAND** 2409 Richmond Ave., (212) 698-3100  
**SYRACUSE** 2544 Erie Blvd., (315) 446-3017, Hotel Syracuse, 510 S. Warren St., (315) 471-6663  
**UTICA** Riverside Mall, (315) 735-1933

**NORTH CAROLINA**  
CHARLOTTE 3732 Independence Blvd., (704) 535-6320  
FAYETTEVILLE Eutaw Shopping Center, 815 Elm St., (919) 483-2418  
GREENSBORO 3718 High Point Rd., (919) 294-5529  
RALEIGH Townsquare S/C, Hwy. 70 W., (919) 781-9380  
WINSTON-SALEM 629 Peters Creek Pkwy., (919) 722-0030

**OHIO**  
AKRON Fairlawn Plaza, 2727 W. Market St., (216) 836-9303  
BEDFORD HEIGHTS 5217 Northfield Rd., (216) 662-2477  
CANTON 5248 Dressler Rd. NW, (216) 494-7230, Mellet Plaza, 3826 W. Tuscarawas, (216) 478-1878  
CENTERVILLE 2026 Miamisburg-Centerville Rd., (513) 435-5167  
CINCINNATI 9725 Montgomery, (513) 793-8688, 16-18 Convention Way (on Skyway), (513) 381-4664  
CLEVELAND 419 Euclid (Downtown), (216) 575-0800, 27561 Euclid Ave., (216) 289-6823  
COLUMBUS 862 S. Hamilton, Great Eastern S/C, (614) 864-2806, The Patio Shop Ctr., 4661 Karl Rd., (614) 436-4666, 400 N. High St., (614) 464-2781  
DAYTON Northwest Plaza, 3279 West Siebenthaler, (513) 277-6500  
FAIRFIELD 7255 Dixie Hwy., (714) Mt. North of I-275, (513) 874-5994  
NORTH OLMSHEAD Great Northern S/C, (216) 734-2255  
PARMA 7551 W. Ridgewood Dr., (216) 842-4030  
TOLEDO 5844 W. Central Ave., (419) 531-5797  
YOUNGSTOWN Union Square Plaza, 2543 Belmont Ave., (216) 744-4541

**OKLAHOMA**  
OKLAHOMA CITY 4732 SE 29th St., (405) 670-4561, Springdale S/C, 4469 NW 50th, (405) 943-8712, 1101 SW 59th St., (405) 634-2406  
TULSA 7218 & 7220 E. 41st St., (918) 663-2190

**OREGON**  
EUGENE 390 Coburg Rd., (503) 687-0082  
PORTLAND 7463 SW Barber Blvd., (503) 246-1157, 9131 SE Powell, (503) 777-2223  
SALEM Salem Plaza, 403 Center, (503) 588-7095

**PENNSYLVANIA**  
ALLENTOWN Crest Plaza S/C, Cedar Crest Blvd. US 22, (215) 395-1755  
BALA CYNWYD 67 E. City Line Ave., (215) 668-9950  
ERIE 5755 Peach St., (814) 868-5541  
HARRISBURG Union Deposit Mall, Union Deposit Rd. #17, (717) 564-6753  
LANCASTER Park City Plaza, US 30, (717) 393-5817  
MONROEVILLE 3828 Wm. Penn. Hwy., (412) 823-3400  
MONTGOMERYVILLE Airport Sq., Rt. 309, (215) 362-1200  
PHILADELPHIA 7542 Castor Ave., (215) 342-2217, 1002 Chestnut St., (215) 923-3080, 1801 Market St., 10 Penn. Center, (215) 568-0901  
PITTSBURGH 5775 Baptist Rd., Hills Plaza, (412) 831-9694, 303 Smithfield St., (412) 391-3150  
SCRANTON Meadow Meadow Ave., (717) 348-8011  
WYOMISSING Berkshire Mall West, 1101 Woodland Rd., (215) 372-8610

**PUERTO RICO**  
HATO REY 243 Franklin D. Roosevelt Ave., (809) 759-8248

**RHODE ISLAND**  
E. PROVIDENCE 850 Waterman Ave., (401) 438-2860  
PROVIDENCE 177 Union St., (401) 831-0320

**SOUTH CAROLINA**  
COLUMBIA Old Sears Bldg., 1001 Harden St., (803) 799-2065  
GREENVILLE N. Hills S/C, (803) 292-1835  
N. CHARLESTON 5900 Rivers Ave., (803) 747-5580

**TENNESSEE**  
CHATTANOOGA 636 Northgate Mall, (615) 870-1366  
JOHNSON CITY Peersless Center, (615) 282-6829  
KNOXVILLE Cedar Bluff S/C, 9123 Executive Park Dr., (615) 690-0520  
MEMPHIS 4665 American Way, (901) 795-4963, 1997 Union Ave., (901) 278-7935  
NASHVILLE 2115 Franklin Pike, (615) 298-5484, Rivergate Plaza, (615) 859-3414

**TEXAS**  
AMARILLO Wellington Sq. S/C, 1619 S. Kentucky, (806) 358-4567  
ARLINGTON 2500 E. Randol Mill, Suite 113, (817) 274-3127  
AUSTIN 8764 E. Research Blvd., (512) 459-4238, Southwood Mall, 1501 Ben White Blvd., (512) 447-0371  
BEAUMONT 5330 Eastern Fwy., (713) 898-7000  
CORPUS CHRISTI 1711 S. Staple St., (512) 887-8901  
DALLAS 15340 Dallas Pkwy., Suite 1100, (214) 934-0275, 2930 W. Northwest Hwy., (214) 350-4144, 1517 Main St., (214) 760-8601, 2588 Royal Ln., (214) 484-9947  
EL PASO 9515 Gateway West, (915) 594-8211  
FT. WORTH 15 One Tandy Center, (817) 335-7198, 2801 Alta Mere, (817) 738-0251  
HARLINGEN 1514 S. Hwy 77, Sunshine Strip, (512) 425-8890  
HOUSTON 211C-FM 1960, (713) 444-7006, 10543 Gulf Fwy., (713) 943-9310, 5900 North Fwy., (713) 699-1932, 6813 SW Fwy., (713) 777-7907, 809 Dallas St., (713) 651-3002, Holland Square Center, 10920 East Freeway, (713) 453-0600  
HURST Northeast Mall, (817) 284-1518  
LAREDO 102 East Calton Rd., (512) 727-4768  
LUBBOCK 3625 34th St., (806) 793-1467  
ODESSA 1613 "A" East 8th Street, (915) 334-8355  
RICHARDSON Fleetwood Sq. S/C, 202 W. Campbell Rd., (214) 669-1494  
SAN ANTONIO 6018 West Ave., (512) 344-8792, 4249 Cernatage, (512) 657-3958

**UTAH**  
ODGEN K-Mart Shopping Center, 3672 Wall Ave., (801) 394-1666  
MURRAY 6051 S. State Ave., (801) 268-8978  
SALT LAKE CITY 415 5th Ave., (801) 322-4893

**VIRGINIA**  
ALEXANDRIA 3425 King St. at Quaker Ln., (703) 870-2600  
ARLINGTON Crystal City, 2301 So. Jefferson Davis Hwy., (703) 521-7479  
FAIRFAX Westfair Center, 11027 Lee Hwy., (703) 273-6500  
LYNCHBURG Hill's Plaza, Ward's Rd., (804) 237-1664  
NEWPORT NEWS Newmarket South Shop Ctr., (804) 245-8203  
NORFOLK 5713 Poplar Hall Dr., (804) 461-0798  
RICHMOND Willow Lawn S/C, 1617 Willow Lawn Dr., (804) 282-3453, 7728 Midland Turnpike, (804) 272-8803  
ROANOKE Franklin Blvd., 3561 Franklin Rd. S.W., (703) 342-6335  
ROSSLYN 1911 N. Ft. Myer Dr. at Rt. 29, (703) 243-5955

**WASHINGTON**  
BELLEVUE Crossroads Mall, North East 8th & 156 St., (206) 644-1804  
BELLINGHAM 1111 Cornwall Ave., Suite B & C, (206) 676-0811  
FEDERAL WAY 33505 Pacific Hwy. South, (206) 838-6830  
SEATTLE 18405 Aurora Ave. N., (206) 542-6184, 1521 3rd Ave., (206) 447-1959, 5030 Roosevelt Way NE, (206) 527-1019  
SPOKANE 7702 N. Division, (509) 484-7000, E. 12412 Sprague, (509) 922-2800  
TACOMA 7030 S. Sprague, (206) 473-7333  
TUKWILA 15425 53rd Ave. S., (206) 248-3710  
YAKIMA 1111 N. First St., (509) 248-9667

**WEST VIRGINIA**  
HUNTINGTON 2701 1/2 5th Ave., (304) 533-3527

**WISCONSIN**  
MADISON 57 West Towne Mall, (608) 833-6130  
MILWAUKEE 6450 N. 76th St., (414) 353-6790  
WEST ALLIS 2731 108th St., (414) 327-4240